



REFLEX NEWS

Houston Photochrome Club

Volume XLII No9

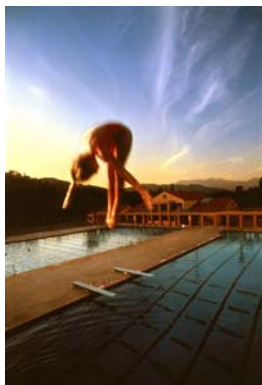
September 2009

www.houstonphotochromeclub.org

PROGRAM for SEPTEMBER

Life Before Photoshop

By Joe Baraban



Most photographers in the workshops I teach, have no idea that it's actually possible to create strong photographs in the camera without the aid of the plug-ins (over 100 that I know of) you can add to Adobe Photoshop.

In my workshops, I show how to create better images by incorporating all the elements of good design. Imagine holding an artist palate, and you're standing in front of an easel with a large blank canvas on it. Instead of having oils such as: Thalo Blue, Cadmium Red, Zinc Yellow, Vermillion Green, and Burnt Umber, your palate consists of: pattern, texture, negative space, perspective, vanishing points, and tension. Now, your canvas is whatever your eye sees, or imagination creates.

My presentation will consist of work I have done and in several cases, I will show the before and the finished image that was shot in the camera without the aid of CS3 or CS4. To be sure, Photoshop is an incredible program, and in today's world, a necessary tool, but I only use it in a manner similar to the way I use to print in the darkroom.

As I explain my 'photographic eye', and thought process in creating my photographs, I'll touch briefly on these design elements as they appear and enhance my photographs

We will meet on Thursday September 10 at 7:00 PM at the Tracy Gee Community Center, 3599 Westcenter Drive, which is one block inside Beltway 8 between Westpark, and Richmond.

Scott Brooks

Deadline for digital submission...

All digital entries must be sent to [Cliff Segerstrom](mailto:Cliff.Segerstrom@sbcglobal.net)

cseger@sbcglobal.net

by Sept 6. Entries received after that will not be eligible for September competition.

FYI... the deadline is always the Sunday before the regular monthly meeting.

Houston Photochrome Club 2009 Annual Awards Banquet

***Make your reservations today for our club's
Annual Awards Banquet!***

Time is running out to reserve your place at our club's annual awards banquet! Please have your reservations and your payment in the hands of our treasurer by no later than September 20. You will not want to miss the evening's events.

Not only will you enjoy the great company of your fellow members and great food, you will also see the very best work our club's photographers have entered into competition during the 2008-2009 competition year and the presentation of awards for the End of the Year competition in Nature, Pictorial, and Black & White.

Date: Saturday, September 26, 2008

Time: 6:30 p.m. Cocktails – Cash Bar
Followed by dinner and awards

Location:

Christie's Seafood & Steaks Restaurant
6029 Westheimer Rd.

At the corner of Greenridge &
Westheimer

Between Fountain View and Hillcroft on
Westheimer

Phone: (713) 978-6563

<http://christies-restaurant.com>

Please see the Menu & Reservation Form in this issue on page 7. Indicate selection and submit form(s) along with payment to our treasurer.

September Field Trip

Workshop Chairman Phillip Tan has a prior commitment on this month's field trip date, so he kindly asked me to fill in for him, not knowing that September 12 was your outgoing President's birthday. Outside of my family I cannot think of a better bunch to share my birthday morning with than you field-tripping Photochromers.

We will go to Brazos Bend State Park to photograph the dragonflies, alligators, deer, golden orb spiders and maybe a shore bird or two. The park opens at 7. I plan to start my trek around Elm Pond shortly thereafter. Entrance fees for persons 13 or older is \$5 per person, unless you're a Texas Parks Passport holder.

For more information about the park, including directions and maps, here's a link to the park's TPWD page
http://www.tpwd.state.tx.us/spdest/findadest/parks/brazos_bend/

There's no need to bring birthday cards. But if you all want to belt out a chorus of the birthday song, please don't scare the animals.
Mark Farrior

Volunteers Needed for Committees for 2010

A number of volunteers are needed to fill various committee chair and committee member vacancies for the coming year. If you have not been actively working on a committee now is your chance to begin. Committee work gives you a chance to know the members better and have input into what happens with our club. Terms are one year beginning October 1, 2009 and ending September 30, 2010. Pick an area that interests you and let us know your desires. *Current Officers*



Photo by Eric Westling

ATTENTION:
All Competition Participants

Images **must** be submitted according to club guidelines or your image may not be included in the monthly competition. Please follow the sizing instructions carefully:

A **horizontal image** cannot be longer than **1024 pixels along the horizontal side**;

A **vertical image** cannot be longer than **768 pixels along the vertical side**.

(Vertical images cannot be sized 1024 pixels along the vertical side!)

The size of the JPEG image needs to be **less than 300 KB**. Rename the image according to the guidelines below.

It is important that the guidelines for naming files be followed when submitting images for the monthly competitions otherwise you run the risk of not being credited with your entries. Images that are not easily identified will be discarded.

To refresh your memory the file labels should have the category initials first, image name second and the last name and first initial last. For example:

A Nature Assignment of birds by John Brown would appear as

NA_Bird_BrownJ.jpg

First names only, nicknames or initials will not suffice for identification.

Also, use the **shortest title** possible when naming slides.

Full guidelines are found in both the 2008 and 2009 Membership Directories and on the website.

DUES ARE DUE

It's that time again. Membership dues are payable now to the Treasurer. In this issue there is a membership form **on page 6 for you to print.**

The annual dues are:

\$25.00 for individuals,

\$29.00 for a family, and a special rate of

\$21.00 for senior citizens (age 65 and over) and students (high school level and below).

\$25.00 for senior families

Mail your form and check to:

Carmen Sewell
114 Townsend Mill Court,
Houston, TX 77094

COMPETITION ASSIGNMENTS 2009

	Nature	Pictorial
Sept	Patterns & Textures	Lights at Night
Oct	Seascapes	Sunrise/Sunset
Nov	Landscapes with Wildlife	People at Work
Dec	Natural Sculptures	Montage/Manipulation

Cookies for September

Ernie Wales

Message From the President...

As my presidency comes to a close, I want to let all of the members know that it has been an honor and privilege to serve this club in this office.

I wish to especially thank those who served our club during my term in both official and unofficial capacities. Everything (coffee pot, newsletter, competition scores, projection screen, etc. etc.) that helps to make our club run does not just happen. These things happen because some of our members put forth the effort to perform the duties that enable our club to function.

Thanks to all of those who helped manage and direct our club's complete transition from the competition medium of 35mm slides to digital. And thanks to those of you who helped make the utilization of the new intra club competition scoring software a reality.

I'd like to thank those of you who have provided constructive commentary for our post competition critiques. I am proud to see that our post-competition critiques have been more frequent, more insightful and more constructive than ever before. And as you all know, more and more members are participating in offering comments. While numerical scores are OK, in my opinion, little is learned without constructive criticism.

Lastly, thank you all for allowing me to be your president. I look forward to my "retirement" and I look forward to seeing more of everyone's great photography!

Mark Farrior

COMPETITION ASSIGNMENTS

SEPTEMBER 2009

Nature Patterns & Textures -Photographs which depict any of the many patterns and textures found in nature. Spider webs, a turtle's shell, the bark of a tree, are examples. Textures are often close ups of a pattern, like the surface of a leaf or the skin of a fish or fruit. The possibilities of subject matter are almost endless

Pictorial— Lights at Night- These are night-time shots where lights are the subject matter or a major contributor to the image. Lights may be manmade (neon, blurred autos' tail-lights, fireworks, holiday lights,) or natural (moonlight, star trails)

Looking ahead to October

Nature —Seascapes. A seascape is a view of the sea. Remember, the "hand of man" should not be visible in the image.

Pictorial— Sunrise/Sunset – This is unlike the March assignment, because in the pictorial, people and the hand of man (manmade things) may be evident in the image. Capture the beauty of the rising or setting of the sun and its effects on the clouds and sky.

VISITORS AND NEW MEMBERS

A hearty welcome to New Members, John Klein and Linda Craddock. We look forward to seeing you at the next meeting.

AUGUST 2009 COMPETITION

Judges: Charleen Baugh, Carmen Sewell, Ernie Wales

Nature Assignment Backlit/Silhouette			Nature General		
Ocotillo	Carmen Sewell	23.0	Dragonfly Closeup	Scott Meyer	24.0
Morning Talk	Helen Pan	20.0	Egret Talking	Jerry Pan	22.0
Palm	Ron Towe	20.0	Feeding Fish	Jerry Pan	22.0
Morning Wade	Eric Westling	20.0	Beetle in Cactus	Joe Smith	21.0
Gulls Silhouetted	Downs Matthews	19.0	Cormorant	Kenneth Carfagno	20.0
Cormorant at Dusk	Joe Smith	19.0	Caught A Mouth Full	Don Pederson	20.0
Heron Silhouette	Don Pederson	16.0	Morning Clouds	Jane Ashley	19.0
Trees in Swamp	C.T. Edwards	15.0	Zion Peak	C.T. Edwards	17.0
Backlit Seascape	Ninfa Palazzolo	14.0	Monopode	Eric Westling	15.0
10 entries	18.7 avg.		10 entries	20.3 avg.	
Pictorial Assigned- Blurred			Pictorial General		
Food for the Gods	Cliff Segerstrom	23.0	El Morro Castle	Helen Weng Pan	23.0
Ben Franklin Bridge	Phillip Tan	21.0	Red Barn	Jane Ashley	22.0
Take-Off	Carmen Sewell	20.0	Mandala Making	Helen Weng Pan	22.0
Blue and Gold Team	Joe Smith	20.0	Lotus Flower-Longwood	Phillip Tan	22.0
Exotic Bloom	Jane Ashley	19.0	HummerHummer	Kenneth Carfagno	21.0
Blurred Lady	John Breaux	19.0	Morning Ride	Cliff Segerstrom	21.0
Zoom	Kenneth Carfagno	19.0	Peggy's Cove Light 0087	D.Segerstrom	20.0
Street Lugging	Scott Meyer	18.0	Maroc Maroc	John Breaux	19.0
Up A Wall	Ron Towe	18.0	Morning Bloom	Wendy Geng	19.0
Bowling	Mark Farrior	17.0	Storm on Mt. Ida	Scott Meyer	19.0
Slippery When Wet	Don Pederson	17.0	Glencoe Glencoe	Carmen Sewell	18.0
Hungry Frog	Downs Matthews	16.0	Abandoned Boat 0017	D. Segerstrom	18.0
Backshore Scenery	Ninfa Palazzolo	16.0	The Poodle Rock	C.T. Edwards	16.0
Faster than Flash	Eric Westling	13.0	Black Breasted Red	Wendy Geng	16.0
14 entries	18.3 avg.		Rocky Neck Harbor	Ninfa Palazzolo	16.0
			Dead End	Mark Farrior	15.0
			The Conversation	Mark Farrior	15.0
			Twirling Fast	Ron Towe	15.0
			8 entries	18.7 avg.	
Black & White			Sept. Assignments		
Tibetan Kids	Helen Weng Pan	21.0	Nature – Patterns & Textures		
Man on Horse	John Breaux	20.0	Pictorial – Lights at Night		
Rail Fence in Fog	Jane Ashley	19.0			
Along the Aegean	Scott Meyer	19.0			
Guests for Dinner	Don Pederson	19.0			
Riveaux Abbey 1	Carmen Sewell	18.0			
Caracara in Grass	Joe Smith	15.0			
Backlit	Ron Towe	15.0			
8 entries	18.2 avg.				

Aug. Entries – 60 Aug. Entries – 60
 Aug. Avg. - 18.8 Aug. Avg. - 18.8

Annual Dues Payment for 2009 – 2010

Dues are payable in July and are to be collected by the Treasurer.
To be eligible for competition, dues must be current. Please complete this form and return it along with your check payable to:

Houston Photochrome Club.

**Return to: Carmen Sewell
114 Townsend Mill Court
Houston, TX 77094**

Name (please print): _____ PSA member: yes ___ no ___
PSA Honors: _____

Spouse Name: _____

Address: _____

City: _____ State: _____ Zip Code: _____

Home Phone: (____) _____ - _____ Work Phone: (____) _____ - _____

e-mail Address: _____

Note: If any of the above information changes in the course of the year, please notify the Membership Chairman as soon as possible so that you can be kept informed on club activities.

Annual dues are:

_____ \$25.00 per individual

_____ \$29.00 per family

_____ \$21.00 for senior citizens (65 and over) and students (high school level and below).

_____ \$25.00 per year for Senior families

(Office use only)

Date paid: _____ Check # _____ Amt _____

2009 Houston Photochrome Club Banquet

Menu and Reservation Form

Please complete one reservation form for each attendee as soon as possible & submit, along with payment (payable to "Houston Photochrome Club") to Carmen Sewell, 114 Townsend Mill Court, Houston, TX 77094 or turn it in at the meeting.

Attendee Name: _____

Special dietary needs / requests: _____
(Check One)

Vegetarian\$23.00 per person

- House salad *Italian*
- Assorted vegetables with pasta and stuffed grape leaves with rice in olive oil.
- French rolls
- White and dark chocolate mousse cake

Tuscan Chicken\$29.00 per person

- House salad *Italian*
- Char-grilled chicken breast topped with fresh herbs in a roasted marinara sauce.
- Garlic mashed potatoes, mixed fresh steamed vegetables, French rolls
- White and dark chocolate mousse cake

Snapper Acapulco.....\$39.00 per person

- House Salad *Italian*
- Grilled snapper filet topped with lump crabmeat, cilantro, Roma tomatoes in a light cream sauce.
- Garlic mashed potatoes, mixed fresh steamed vegetables, French rolls
- White and dark chocolate mousse cake

12 oz. Ribeye Steak.....\$45.00 per person

- House Salad *Italian*
- Char-grilled 12 oz ribeye steak, topped with fresh sautéed mushrooms.
- Garlic mashed potatoes, mixed fresh steamed vegetables, French rolls
- White and dark chocolate mousse cake

Beverages: Iced Tea, Coffee, Soft Drinks
Prices include beverages listed above, tax and gratuity.

MEMBER SHOWCASE



Above left: **Male Cardinal**
by Joe Smith

Below left: **Red Tail Hawk**
by Jane Ashley

Below: **Dusk**
by Philip Tan

Below Right: **Orange (TX) Botanical Garden**

by Charles Edwards



Notice of Copyright: All photographs appearing in this publication belong exclusively to the photographer and may not be downloaded or used in any form without the express permission of that photographer.

Editor.

MEMBER SHOWCASE



Top left: **Steam Engine**

by Jane Ashley

Top Right: **Painted Bunting**

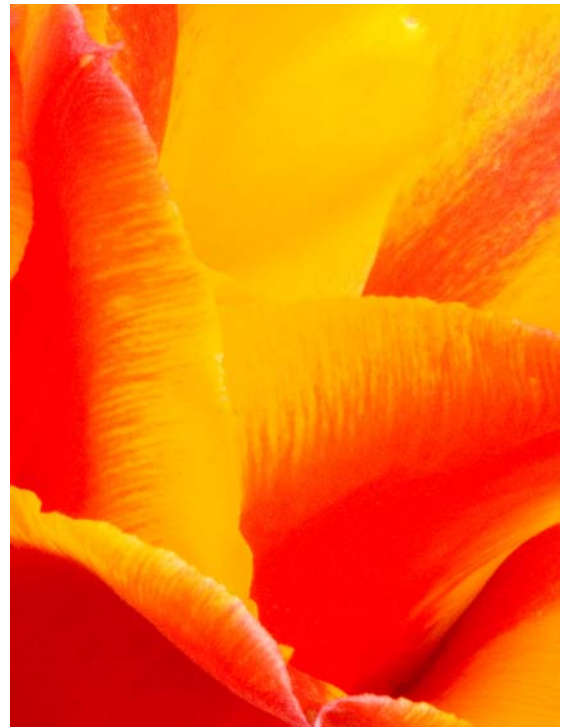
by Joe Smith

Below: **Capitol, Williamsburg VA**

by Philip Tan

Below Right: **Tulip Up Close**

by Carmen Sewell



IMAGES WANTED FOR MEMBERS' SHOWCASE

Pick a shot you would like to share with the club and email it to me. **It should not have been entered into competition**, in fact, this is the venue for those good images that don't fit a category. Submit no more than **one image per month per member**, please. Each month up to six images, dependent upon available space, from the submitted images will be selected and published in the newsletter. If your favorite doesn't get published right away and you really would like to see in print (or online) feel free to request that it be considered again the next month. Deadline is the 20th of each month.

Carmen Sewell, Editor

Directory Cover Photos Needed

If you have an image that you would like to submit for possible use on the Directory cover, please do so to me at csewell3@comcast.net If you have had a cover in the past you are still eligible

Both Nature and Pictorial images are needed. The image must be in vertical format, preferably with some space for text. If you are in doubt about the suitability of an image then submit anyway and let me make the decision.

For selection purposes send small files. When I have chosen the two for use I will ask for .tif or high quality .jpg files for the printing. Please limit your submissions to 3 nature and 3 pictorial. Deadline for images is October 1, 2009.
Editor



Houston Photochrome Club is a member of the Gulf States Camera Club Council and the Photographic Society of Amer-

